



roseridge.ab.ca

# Roseridge Transfer Station

Operating the Roseridge Transfer Station Since 2015

### Location:

RR215 & Twp 575  
(North of town on 44 Street)

### Hours:

Wednesday to Saturday  
from 9:00 AM - 2:00 PM

### Phone:

**780-203-5124**

**Closed on all statutory  
and general holidays**



**RESIDENTIAL  
PERMIT IS REQUIRED**

## Transfer Station Facility User Directions

### General Facility Guidelines:

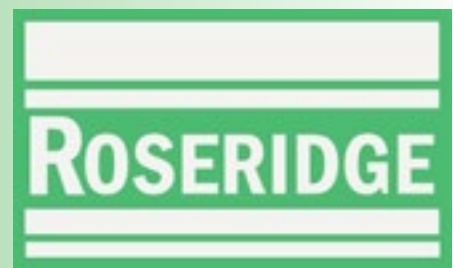
- ◆ A bin system keeps things organized—just sort and drop.
- ◆ Hand-bombing only—no dumping or oversized loads.
- ◆ Designed for residential waste—no hoist dumping or mixed loads.

### Sorting it right makes recycling work!

- ◆ **Know before you throw:** Keep recyclables out of your garbage.
- ◆ **Everything has a place:** Take the time to sort properly.
- ◆ **Use designated areas:** Place sorted materials in correct bins.
- ◆ Food containers must be clean and dry before recycling.
- ◆ Styrofoam, flexible plastic, and glass belong in the garbage.
- ◆ No plastic bags in recycling areas.

### Sorting is easy at home!

Ask for a reusable recycling bag and a battery collection box to make it even simpler.

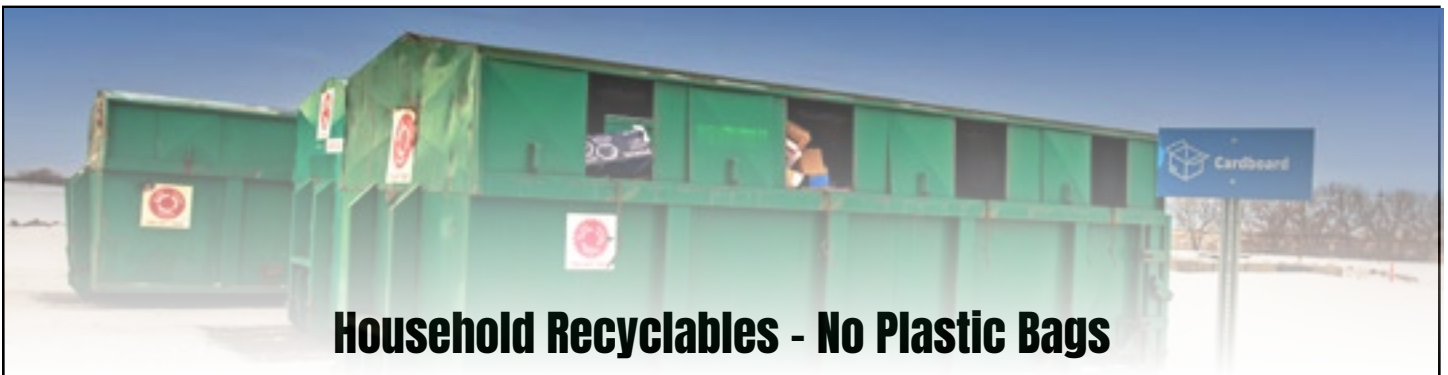


## Waste Transfer Bins

- ◆ **Scrap Metal: Household scrap**  
(Including lawnmowers, bikes, and bed frames)
- ◆ **Trees & Branches: Green wood only**  
(No yard waste, grass, sod, weeds, or lumber)
- ◆ **Household Garbage**  
(No large furniture, box springs or mattresses)

## Items Not Accepted

- ◆ Animal Carcasses
- ◆ Automobile Batteries
- ◆ Concrete, Concrete Blocks & Rocks
- ◆ Railway Ties
- ◆ Tree Stumps
- ◆ Noxious Weeds
- ◆ Shingles
- ◆ Freon Units - refrigerators, air conditioners.



## Household Recyclables - No Plastic Bags

### #1-7 RIDGED PLASTIC

- ◆ Shampoo Bottles, Laundry Detergent & Bleach
- ◆ Yogurt, Margarine, and Food Containers
- ◆ Clam Shells
- ◆ Plastic Utensils
- ◆ Ice Cream Pails

### MIXED PAPER

- ◆ Flattened Food and Shoe Boxes
- ◆ Newspaper, Flyers, Magazines
- ◆ Office and Shredded Paper
- ◆ Paper Bags

### CORRUGATED CARDBOARD

- ◆ Flattened Cardboard Only  
No paper, boxboard, egg cartons, Styrofoam, plastic bags, or packaging

### ALUMINUM AND METAL

- ◆ Tin and Aluminum Food Cans

### Hazardous Special Products HSP

Starting April 1, 2025 - you can keep even more products out of the landfill.



**Check the Label – Look for These Symbols**

**Corrosive:** Cleaning products, rust removers

**Flammable:** Fuels, adhesives

**Toxic:** Automotive additives, solvents


**Pressurized:** Non-refillable propane & aerosol cans

### CONTENTS AND CONTAINERS ACCEPTED

[CLICK HERE FOR FULL HSP PROGRAM DETAILS](#)

### HOUSEHOLD BATTERIES

AA, AAA, lithium-ion, button cell, etc. are now accepted at the Transfer Station



**ROSERIDGE**

## Alberta Recycling Management Authority Stewardship Programs

### PAINT

- ◆ Spray Paint
- ◆ Interior and Exterior Paints and Stains
- ◆ Primers, Sealers, and Undercoats
- ◆ Stains and Finishes
- ◆ Solvents and Thinners
- ◆ Wood Preservatives

**Do not include paint brushes, rollers, or rags**

### TIRES

- ◆ Car and Light Truck Tires
- ◆ Medium Truck Tires
- ◆ Bike Tires

Specialty, Industrial, and Other Tires with a Rim Diameter of 8 inches up to and including 24 inch, such as Trailer Tires (e.g., Boat, Recreation, Travel, Motorcycle).

### USED OIL

- ◆ Used motor oil & oil containers (30L or less)
- ◆ Fuel & oil filters



### ELECTRONICS

- ◆ TVs
- ◆ Computers
- ◆ Printers
- ◆ Laptops
- ◆ Small Appliances (Hair Dryers, Toasters, Vacuums)
- ◆ Audio Visual (CD Player, Speakers, Cameras)
- ◆ Telecom (Phones, tablets, Answering Machines)
- ◆ Power Tools

### SAFETY CONSCIOUS SITE

**Roseridge Health and Safety obligations don't end with our workers.**

#### GENERAL SAFETY RULES:

- ◆ Observe the posted speed limits and don't drive distracted
- ◆ Kids and pets must remain in your vehicle at all times.
- ◆ Smoking is prohibited
- ◆ Unauthorized and uncontrolled removal of waste is prohibited
- ◆ Unload waste in designated areas only

### ROSERIDGE WASTE MANAGEMENT SERVICES COMMISSION

Serving the Community Since 2015

#### CONTACT INFORMATION:

**Address: RR215 & Twp 575**  
(North of town on 44 Street)

**Phone: 780-203-5124**

**Email: [info@roseridge.ab.ca](mailto:info@roseridge.ab.ca)**

**Website: [ROSERIDGE.AB.CA](http://ROSERIDGE.AB.CA)**

**Facebook: [@RoseridgeWasteManagement](https://www.facebook.com/RoseridgeWasteManagement)**

**Thank you for keeping our community clean!**