

New Guidelines for Burn Barrel Disposal

To improve safety and environmental compliance, Roseridge is updating its burn barrel disposal policies. This guide provides answers to common questions about these changes.

Q: What's happening with burn barrel disposal at Roseridge?

A: As of October 19, 2024, Roseridge will no longer accept full burn barrels at our tipping face. After this date, all ashes must be bagged or boxed before disposal, and empty burn barrels should be placed in our designated metal pile for recycling.

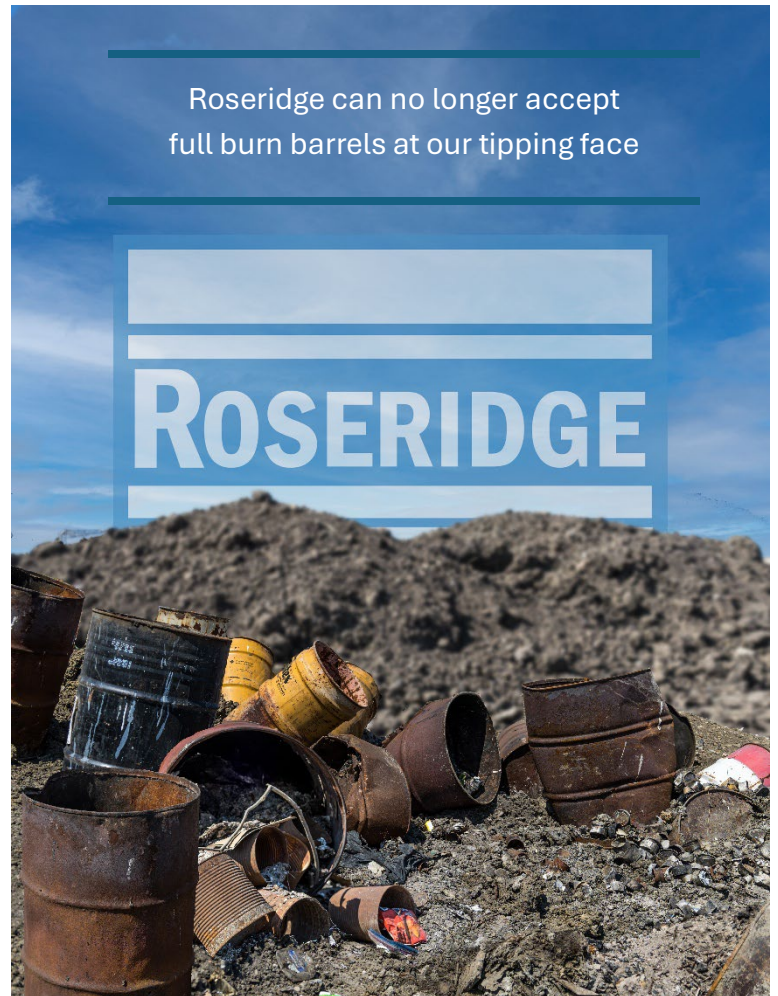
Q: Can I still bring ashes to the facility?

A: Yes, you can still bring ashes to the facility, but they must be cold, bagged, or boxed before disposal. This ensures safe handling and prevents any risk of fires at our landfill.

Q: Why are these changes being made?

The changes are being made for two main reasons:

- **Safety Concerns:** Hot ashes can reignite, posing a significant fire risk in our bins and in our landfill. By requiring ashes to be removed from barrels, we can prevent potential fires and ensure safer handling.
- **Environmental Legislation:** Our new facility, opening October 21st, cannot accommodate barrels being deposited directly on the ground. Ashes must be properly contained to ensure environmental protection.



Q: What do I do with my unwanted burn barrel?

A: After removing the ashes, place your empty burn barrel in the designated metal recycling area. This helps us recycle the material and keeps it out of the landfill.

Q: Why can't I just drop off a full burn barrel?

A: Full burn barrels pose a fire risk, as ashes may still contain embers that can reignite when exposed to air. This creates a dangerous situation for our staff, facility users and the environment. By removing ashes and ensuring they are properly cooled and contained, we can prevent these incidents.

Q: How do I make sure my ashes are safe to bring?

A: To ensure your ashes are safe for disposal:

- Let the ashes cool for at least one week after burning.
- Place them in a disposable container (bag or box) that can be securely closed.



Q: Does the type of ashes matter?

A: It can. If you are burning just wood, you can save a trip and put the ashes in your garden, or brought to Roseridge in a certified compostable bag to be placed in the organics bin.

Mixed garbage ashes, containing toxins and need to be contained and transferred to the landfill.

Q: Are there any alternate solutions for handling burn barrels in the future?

A: We are always looking for ways to improve safety and convenience for residents. We are open to exploring alternate solutions, including designated dumping areas or specialized containers that

could make the process easier. If you have suggestions or ideas, please share them with us. We are committed to finding the best balance of safety, recycling, and efficiency.

Q: What if I have more questions or suggestions?

A: We welcome your input! If you have any questions or suggestions on how to improve this process, or if you have ideas for alternative disposal methods, please call or text Fred at 780-983-5273. We are eager to hear your thoughts and work together on solutions.

Roseridge.ab.ca